



WebMD[®] Business Services Medicare Manager/ DDE Plus[™]

Manage Medicare Part A Claims with Ease

WebMD Medicare Manager/DDE Plus simplifies claims management for Medicare Part A providers. Its effectiveness stems from the ability to view, prioritize, and sort claims by numerous methods and easily move directly to claims within the DDE system for easy correction.

Make a Positive Impact on the Bottom Line

Medicare Manager/DDE Plus employs a direct interactive approach to eliminate costly, time-consuming manual searches for claims within the DDE system. It can sort suspended (S-Status), Returned to Provider (T-Status), rejected (R-Status), and denied (D-Status) claims by the highest dollar value to highlight the most valuable claims first. DDE Plus allows you to easily correct claims within the Medicare DDE system through the Internet.

VALUABLE ADVANTAGES

- *Increased Medicare Collections & Improved Staff Productivity*
- *Web-based Monitoring & Management of Medicare Claims Inventory*
- *Efficient Organization of Suspended, Returned to Provider (RTP), Rejected, Denied & Paid Claims*
- *Easy Correction of T-Status Claims*
- *Resolution of Time-Sensitive Additional Development Requests (ADR) for Suspended (S-Status) Claims*
- *Claim Aging Reports that Highlight Claims Prior to Expiration*
- *Direct, Real-Time, User-Friendly Access to the Common Working File through the FISS*
- *Elimination of Costs Associated with Dedicated FISS Communication Links*

**Call WebMD Business Services at
800.444.4336 Today.**

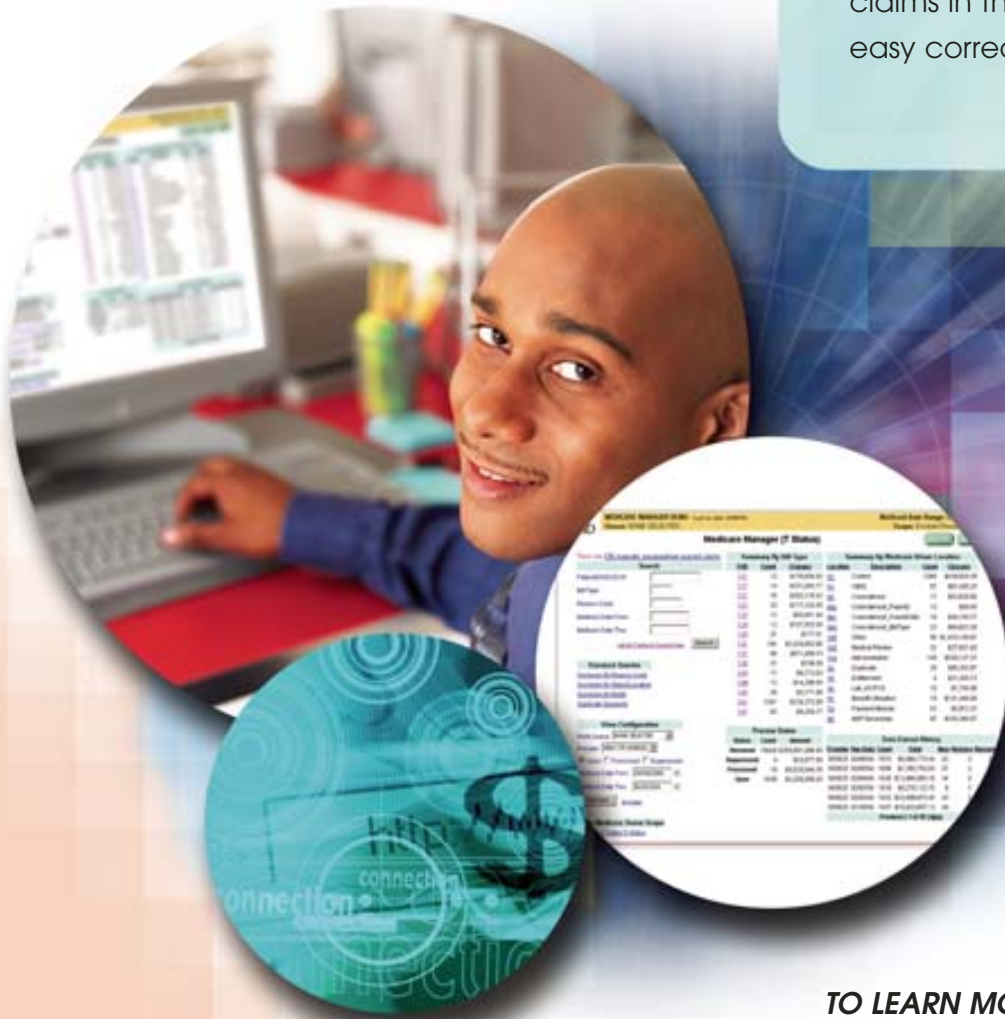
Lower Denial Rates & Resolve Backlogged Claims

Medicare Manager provides excellent assistance in managing your Medicare Part A claims inventory. Help with Additional Development Requests (ADR) associated with S-Status claims can lower denial rates. In addition, identification and resolution of highest priority T-Status claims can turn backlogged claims into revenue.

How does it work?

Medicare Manager shows the number of claims in each category (type of bill, error location, reason code, etc.) and the total dollars involved. Claims can be sorted by dollar amount, mail back date, claims count, error location, and type of bill. Each claim can be drilled down to show specific information related to errors, and collection can even be assigned to resources within your organization.

When used in conjunction with Medicare Manager, DDE Plus can boost productivity even more by moving directly to those claims in the Medicare DDE system for quick, easy correction.



WebMD[®]
Business Services

Simplifying the Business of Healthcare

TO LEARN MORE about our company, our services, and our commitment to improving healthcare, visit our website at www.webmdbusinessservices.com.

1283 Murfreesboro Pike • Nashville, TN 37217
800.444.4336 • marketing3@webmd.net