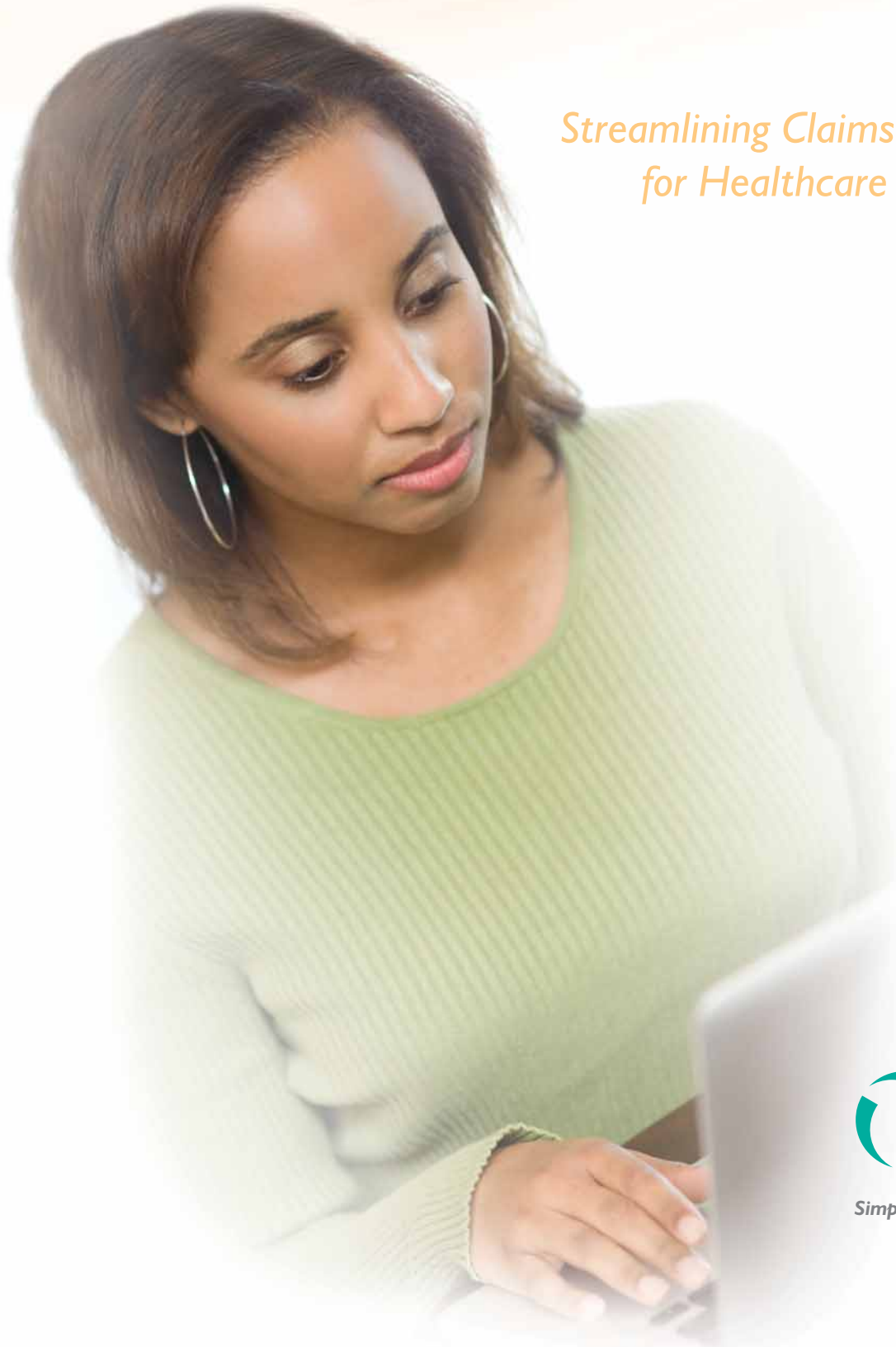


EMDEON CLAIM MASTER®

*Streamlining Claims Management
for Healthcare Providers*



Simplifying the Business of Healthcare

ONE SYSTEM TO MANAGE ALL CLAIMS

One System to Manage All Claims

With Emdeon Claim Master®, our web-based billing management solution, hospital billing departments and healthcare provider business offices only need to turn to one vendor for all their claims management needs. Claim Master can save time and money by providing one interface to manage claims, from start to finish, for virtually all government and commercial payers.

Flexible and easy to use

Claim Master's innovative and easy-to-use web-based interface allow hospitals, health systems and provider practices to manage their entire billing process across all facilities. Claim Master utilizes unique tools to aid decision support, view dashboard snapshots of claims inventory, manage workflow, manage denials and prioritize resources, resulting in improved efficiency and increased revenues. In addition, Claim Master provides trending analytics at the patient level while accurately illustrating the claim lifecycle, enabling an executive-level view to monitor the end-to-end experience of individual claims in the claims management process.

Centralize claims management

All claims for all facilities are tracked every step of the way through Claim Master. Claim Master streamlines claims management by providing one central location to easily monitor all claims 24/7 from submission to acknowledgement by payers. It's easy-to-use interface offers a wealth of available reporting and display options to help providers clearly understand the location and status of any claim or batch of claims at any given time.

Efficient Claims Management

Convenient Centralization

Streamlined Workflow

Single Vendor Solution

More Payer Connections
than Anyone in the Industry

Contact Us Today!

877.EMDEON.6

(877.363.3666)

instsales@emdeon.com



"Emdeon Claim Master has improved our cash flow by helping us get our claims to the payer quicker, and our claims are actually cleaner. This enables us to get payment in faster, reduce our AR days and ultimately increase our cash flow."

Al Payne
Revenue Cycle Manager
Martha Jefferson Hospital

How does Emdeon Claim Master® work?

- Claims are captured from source healthcare information systems and incorporated into the Claim Master relational database to be tracked through event-driven updates.
- The Claim Master database serves as the repository for all claims management functions including viewing, editing (in real-time), correcting and submitting claims.
- During validation, claims are separated into "clean" claims and those needing additional information. Clean claims are passed on to the Emdeon clearinghouse in a HIPAA-compliant format. From the clearinghouse, claims are submitted to the appropriate payers.
- Claims needing correction or additional information are edited, validated and then submitted. Our real-time validation ensures claims are correct when submitted.
- Claim Master provides graphical reporting tools to monitor and manage claims from generation to payment.

Leverage powerful decision support

Claim 360°, a feature of Claim Master, provides intuitive web-based graphical reports for management with valuable insights showing various views of information including:

- Status of all claims in the system
- Types of claim errors
- List of claims sorted by dollar amount, work queue, payer and more

This valuable information allows management to identify root causes, enhance workflow and allocate resources to maximize revenue.



Discover The Power Of An Emdeon Claims Partnership

Simplicity. Centralization. Efficiency.
Convenience. Connectivity.

At Emdeon, we're committed to empowering healthcare professionals through innovative cash flow solutions and a connection to the most complete industry network of payers, partners and resources. Our unique approach helps you manage the business of healthcare in every way, so you save considerable time and money while you focus on, as it should be, providing the best healthcare possible.

Extend Emdeon Claim Master® with powerful Add-On features

Powerful Add-On features make Claim Master a truly complete one-stop billing management solution for organizing information from government and commercial payers. Add-On features include:

- Eligibility and benefits verification
- Electronic Remittance Advice (ERA)
- Denial management
- Claim status inquiry
- Automated secondary claim processing
- Automated payment posting
- Workers' Compensation/Auto Medical electronic attachments

Integrating these multiple functions, one after another, eliminates re-keying data saving time and reducing errors.

Emdeon is a leading provider of revenue and payment cycle solutions that connect payers, providers and patients to improve healthcare business processes.

To learn more about our company, our services and our commitment to improving healthcare, visit our website at www.emdeon.com.

Features

- Simple, easy web-based tracking of all claims with capability to drill down to the patient level
- Powerful decision support and reporting capabilities
- Easy claim error correction
- Time-saving add-on features including automated secondary billing, integrated claim status and eligibility verification transactions
- Numerous installation alternatives
- Customizable user-level security and views
- Automatic updates for payer edits and industry standard codes
- Helpful, free product support

Benefits

- Single vendor claims solution
- Simple, easy centralized management of all claims
- Streamlined revenue cycle management
- Fast data entry with fewer errors
- Reduced outstanding accounts receivable days
- Always current with latest updates (web-based/ASP)
- Improved claim acceptance rates
- Most payer connections in the industry



3055 Lebanon Pike, Suite 1000
Nashville, TN 37214 USA
877.EMDEON.6 (877.363.3666)
instsales@emdeon.com